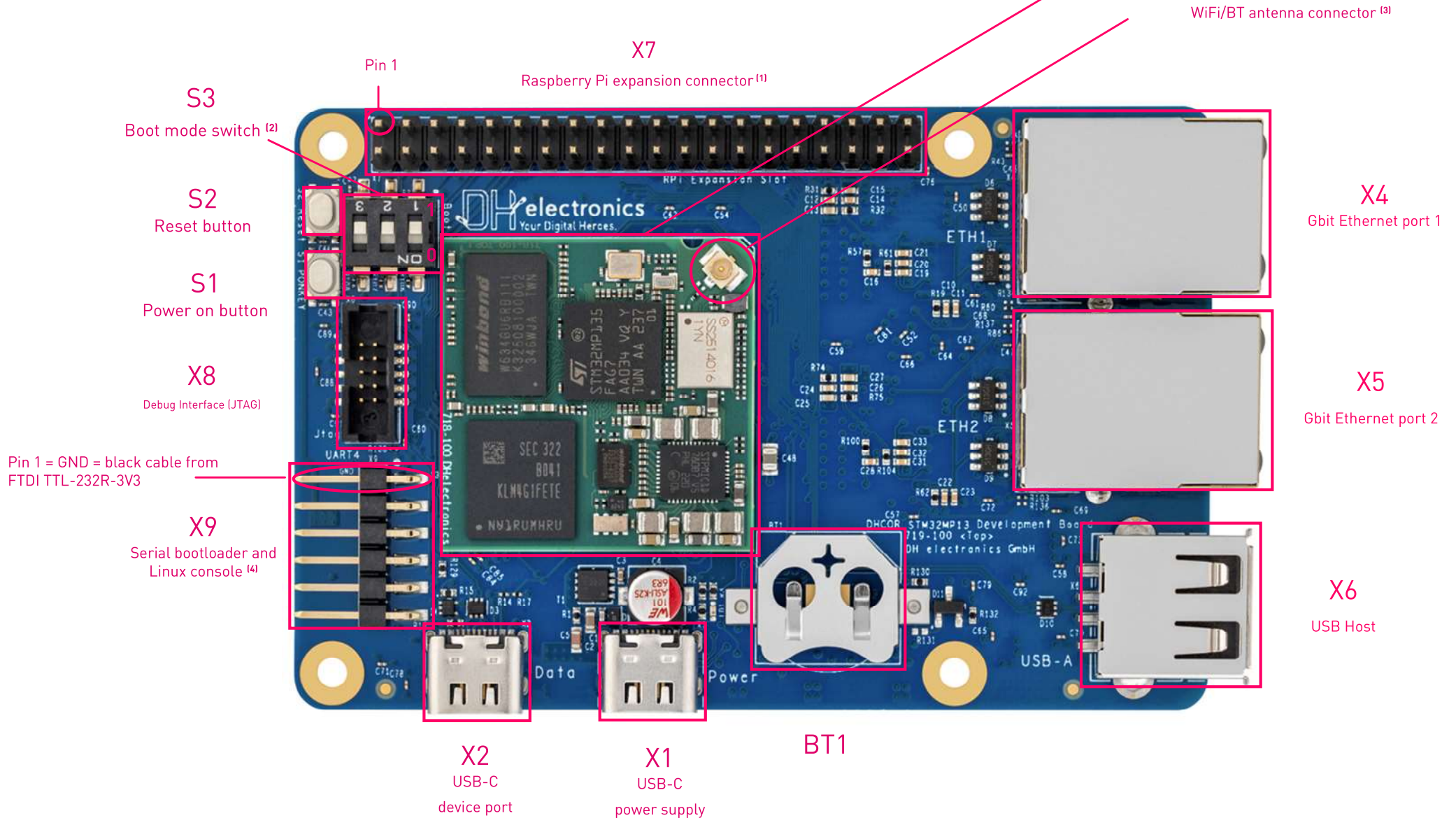


## DHSBC STM32MP13 Quick-Start-Guide



**(1) Pin assignment**

Pin number	Signal	MP13 port name	Pin number	Signal	MP13 port name
1	VDD_3V3	-	2	VDD_5V	-
3	I2C5_SDA	PE13	4	VDD_5V	-
5	I2C5_SCL	PD1	6	GND	-
7	MCO_2	PA14	8	USART2_TX	PF11
9	GND	-	10	USART2_RX	PD15
11	USART2_RTS	PA1	12	SAI1_SCKA	PA4
13	DFSDM1_CKOUT	PD3	14	GND	-
15	DFSDM1_DATIN3	PE4	16	FDCAN1_TX	PG10
17	VDD_3V3	-	18	FDCAN1_RX	PD0
19	SPI3_MOSI	PF1	20	GND	-
21	SPI3_MISO	PD4	22	FDCAN2_TX	PG0
23	SPI3_SCK	PH13	24	SPI3_NSS	PF3
5	GND	-	26	FDCAN2_RX	PE0
27	I2C1_SDA	PE8	28	I2C1_SCL	PD12
29	ADC1_INP12	PA3	30	GND	-
31	TIM5_CH3	PH12	32	TIM13_CH1	PA6
33	TIM4_CH3/USART1_RX	PD14	34	GND	-
35	SAI1_FSA	PE11	36	USART2_CTS	PE15
37	USART1_TX	PC0	38	SAI1_SDA	PD6
39	GND	-	40	SAI1_SDB	PA0

**(2)**

BOOT2	BOOT1	BOOT0	Initial boot mode	Comments
				Wait incoming connection on: - USART3/6 and UART4/5/7/8 on default pins - USB high-speed device on OTG_HS_DP/DM pins
0	0	0	UART and USB	
0	1	1	Serial NOR-Flash	Quad SPI boot (located on System-On-Module)
0	1	0	eMMC	SDMMC2 = eMMC boot (located on System-On-Module)
1	0	0	Engineering boot (no flash boot)	Used to get debug access without boot from flash memory
				Wait incoming connection on: - USART3/6 and UART4/5/7/8 on default pins - USB high-speed device on OTG_HS_DP/DM pins
1	1	0	UART and USB	

**(3)**

On the DHCOR STM32MP13 a standard U.FL. connector from TE 1909763-1 is used. U.FL. is compatible with the IPEX MHF1 connector specification. DH recommends the following antenna as a possible external antenna for the DHCOR STM32MP13:  
Unictron AA258 - H2B1PC1A1C095L

**(4)**

Please use the FTDI TTL-232R-3V3 cable for PC connection.

Needed Terminal configuration:

Baud rate: 115200, Data: 8 bit, Parity: none, Stop: 1 bit, Flow control: none