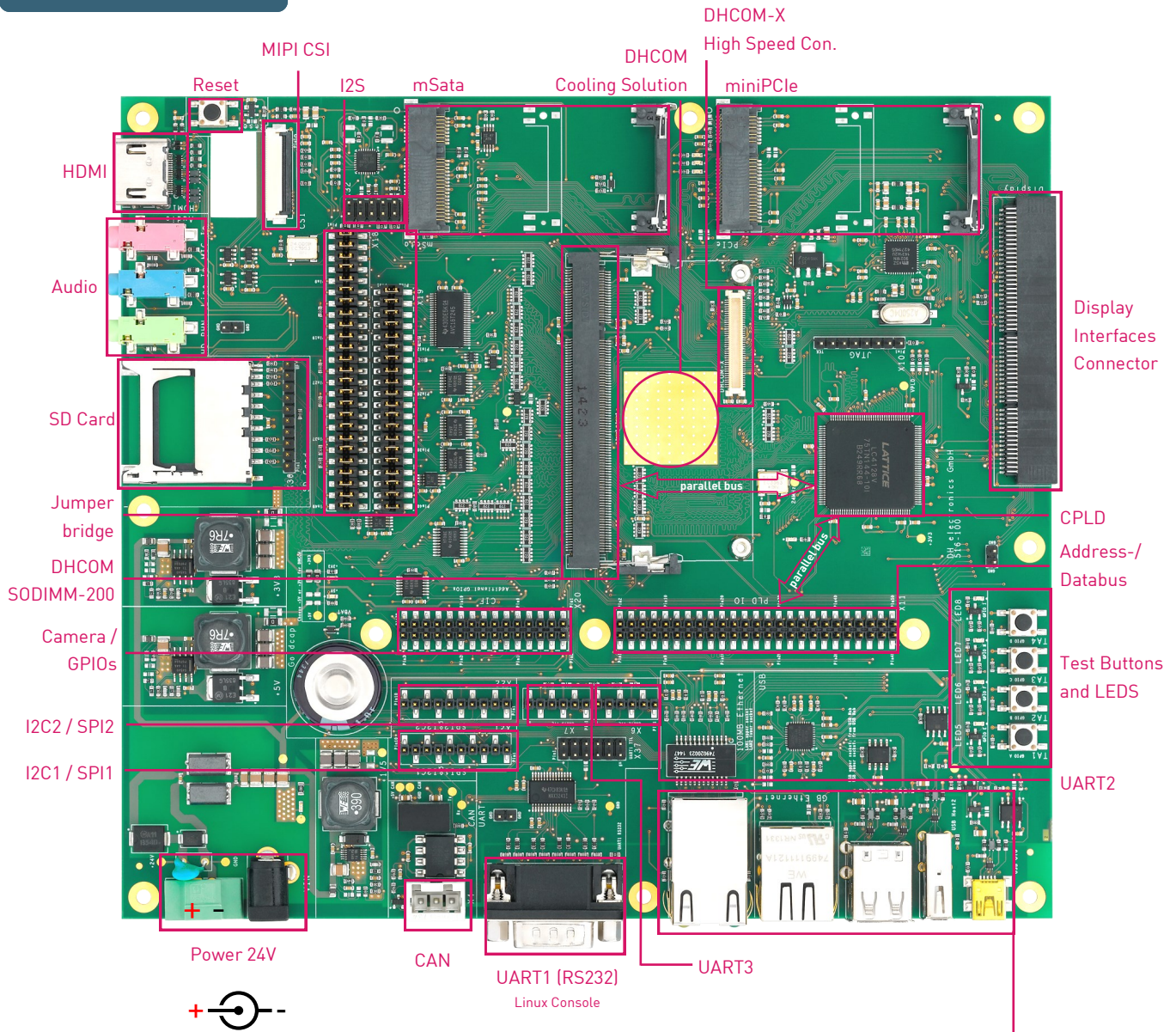


# Quick Start Guide Linux

DHCOM PDK2



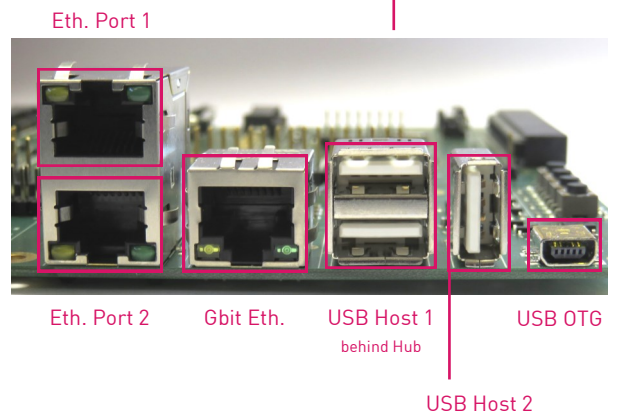
## Overview



DHCOM	Eth. Port 1	Eth. Port 2	Gbit Eth.	USB Host 1	USB Host 2	USB OTG
i.MX25	X	-	-	X	-	X
AM35x	X	-	-	X	X	X
AM335x	X	X	-	X	-	X
i.MX6	X <sup>1)</sup>	-	X <sup>1)</sup>	X	-	X
SD600E	X <sup>2)</sup>	-	-	X	X	X

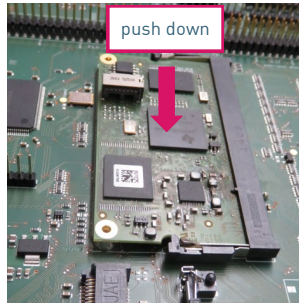
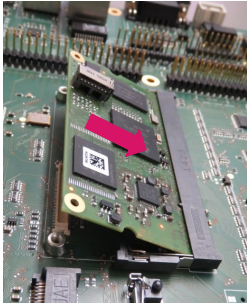
<sup>1)</sup> Either 100Mbit Ethernet or Gbit Ethernet (via RGMII and Gbit PHY on PDK2)

<sup>2)</sup> Gbit Ethernet available on this port with SD600E

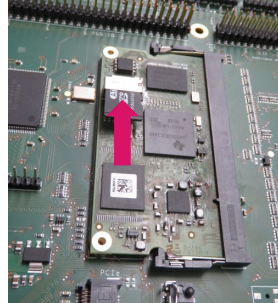


## Preparations

### 1. Insert COM



### 2. Insert microSD Card



We recommend Tera Term. The port number must be chosen individually. Under Setup → Keyboard... activate "Transmit DEL by: Backspace key"

Download Link:

<http://www.heise.de/download/teraterm-pro.html>

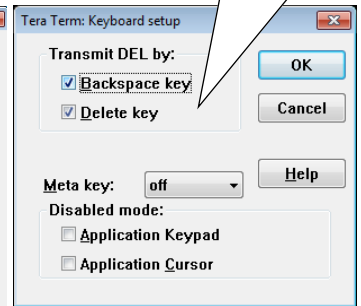
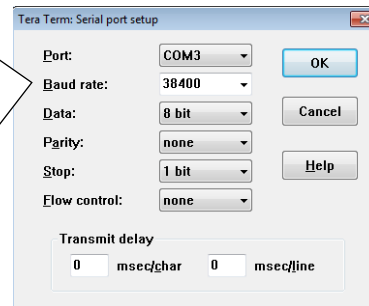
Note: If you press „backspace“ during start up you can get into the bootloader menu

### 3. Establish serial connection with host PC and start terminal program (optional)

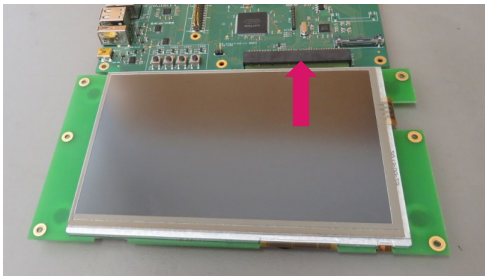


Baud rate is depending on the used COM:

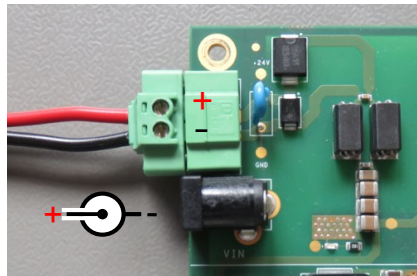
	Baudrate	38400	115200
i.MX25	X		
AM35x	X		
AM335x			X
i.MX6			X
SD600E			X



### 4. Connect display (optional)



### 5. Connect power supply (+24VDC)



## Startup

1. Turn on power supply. (Necessary updates are done automatically before first Linux startup)
2. Linux will start automatically. Login: **root** / Password: **foo**

## Support

Wiki (software support): <http://xlon.de/wiki/>

Software sources available on Github: <https://github.com/dh-electronics>

PDK2 documentation and schematic: User Manual is available at [www.dh-electronics.com](http://www.dh-electronics.com) product download area.

DHCOM hardware design guide: Available at [www.dh-electronics.com](http://www.dh-electronics.com) product download area.

Always have a look on our homepage ([www.dh-electronics.com](http://www.dh-electronics.com)) for newest information about our core modules.